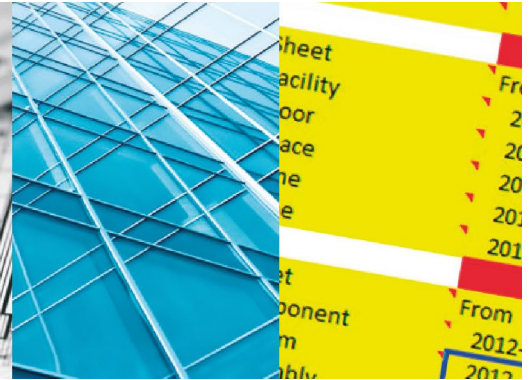
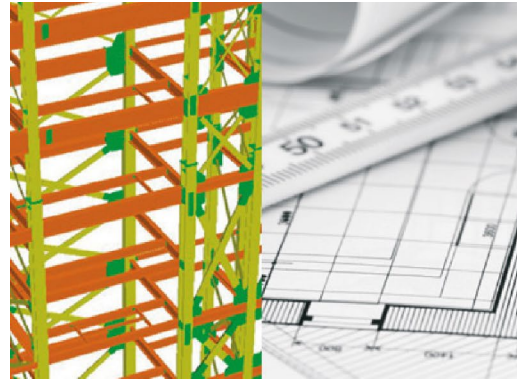
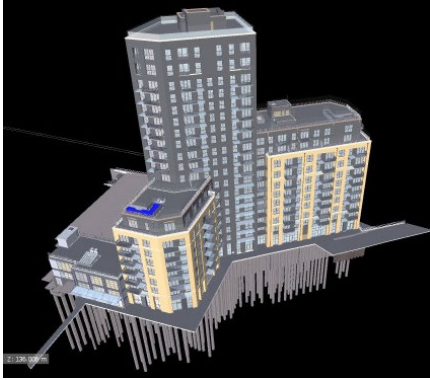


BUILDING INFORMATION MODELLING (BIM)

POLICY STATEMENT



Policy Statement: Rev 10

Issue Date: 10/01/2021

McAleen & Rushe Contracts U.K. Ltd. is fully committed to the progressive application of Building Information Modelling (BIM) on future projects. This is coordinated by our dedicated BIM Manager and BIM Champions from each department within the company.

McAleen & Rushe believe that real value can be delivered on a project when the information has been developed within a collaborative and data rich environment.

McAleen & Rushe has developed in-house capability and increasing competence. We have adopted an outcome focused approach to updating our tools. Our investment in technology and training is significant and is improving our awareness and knowledge of best practice. This investment allows us to offer our expertise and support to guide our clients, designers, supply chain partners and other stakeholders with their BIM journey, with a view to optimising our working conditions.

Project teams will be familiar with and implement practices detailed in PAS 1192-2:2013 where they are agreed in project specific BIM Execution Plans (BEP), in response to Employer's Information Requirements (EIR).

On projects where BIM is implemented, we will work closely with the entire project team to ensure the benefits of enhanced collaboration and information sharing are achieved by all and that lessons learnt are used to drive improvement going forward.

This policy and our associated procedures will be issued to all employees, staff and sub-contractors through on-going training programmes. It will be reviewed for continued suitability as a minimum annually and any changes communicated to all for immediate adoption.

Signed:

A handwritten signature in black ink, appearing to read 'E Laverty'.

Eamonn Laverty
Chief Executive Officer

McAleen & Rushe Contracts UK Ltd
17-19 Dungannon Rd
Cookstown
Co. Tyrone
BT80 8NR

T +44(28) 867 63741
F +44(28) 86758962
E info@mcaleer-rushe.co.uk

www.mcaleer-rushe.co.uk